



INSTALLATION INSTRUCTIONS

Unitronic Downpipe for 1.4 TSI® EA211 UH032-EXA

Unitronic recommends that you read through the entire installation instructions prior to beginning the installation to familiarize yourself with the included components, tools required, and procedures involved with the installation.

DISCLAIMER: Unitronic recommends that a Unitronic Authorized Dealer or other qualified and trained professional should perform the installation of this product.

Unitronic Installation Instructions are also available in digital format, if you prefer. Please visit the corresponding product page for a link to download the digital Installation Instructions. www.getunitronic.com

It is recommended to confirm all parts are present prior to beginning the installation.

PACKING LIST:

PART NUMBER	DESCRIPTION	QUANTITY INCLUDED
UH002-EX7	3-inch Sealing Ring	2
UH001-EX0	UNITRONIC 3" V-BAND CLAMP (Clampco)	2
UH010-EX3	3" to 55mm Reducer for 1.4TSI Downpipe	1
UH015-EX2	1.4TSI Cat Section	1
UH025-EX1	1.4TSI Midpipe	1

RECOMMENDED TOOLS NEEDED:

- 6mm Allen Key
- 22mm Box Wrench
- O² Sensor Socket
- 3/8 Ratchet
- 13mm Socket
- 11mm Socket
- 14mm Socket
- Pry Bar or Flat Head Screwdriver



INSTALLATION INSTRUCTIONS

Unitronic Downpipe for 1.4 TSI® EA211 UH032-EXA

- 1** Place the vehicle on jack stands or vehicle hoist and open the engine compartment.
- 2** Unplug the primary Oxygen sensor near the brake fluid reservoir. (See Fig. A)
- 3** Remove the Oxygen sensor wiring from the firewall retaining clips. (see Fig. B)
- 4** Using your Oxygen sensor socket, remove the Oxygen sensor. Be careful not to twist the wires too much while removing the sensor. (See Fig. C)
- 5** Using your extension and 13mm socket, loosen the Downpipe bracket nut on the left-hand side (See Fig. D)
- 6** Using your 6mm Allen Key and 3/8" ratchet, remove the fastener from the factory V-Band. (See Fig. E)
- 7** Using your pry bar or flat head screwdriver, remove the factory V-Band. (see Fig. F)
- 8** From under the vehicle, use your 13mm socket to remove the two (2) fasteners on the downpipe bracket. (See Fig G)
- 9** Using your 13mm socket, remove the four (4) fasteners on the chassis reinforcement bracket. (See. Fig H)



FIG. A



FIG. B



FIG. C



FIG. D



FIG. E

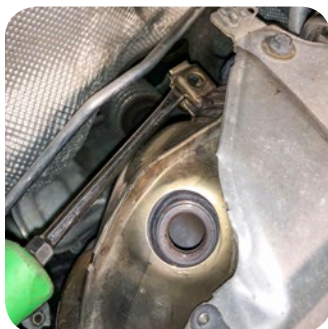


FIG. F

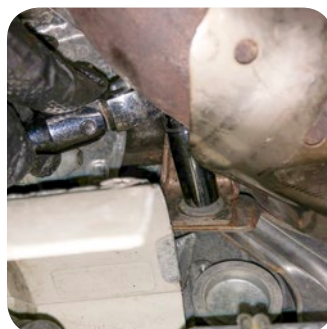


FIG. G

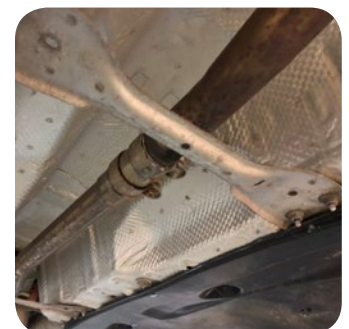


FIG. H



INSTALLATION INSTRUCTIONS

Unitronic Downpipe for 1.4 TSI® EA211 UH032-EXA

- 10** Using your 13mm socket, loosen the two (2) fasteners on the middle exhaust sleeve clamp. (See Fig I)
- 11** Using your 22mm wrench, remove the bottom Oxygen Sensor. Be careful not to twist the wires too much while removing the sensor. (See Fig. J)
- 12** Using your 13mm socket, remove the two (2) fasteners holding the downpipe bracket to the subframe. (See Fig K)
- 13** Remove the downpipe from the vehicle by rotating it to the side and sliding it out. (See Fig. L)
- 14** Remove the downpipe bracket by pulling it off the OEM downpipe. (See Fig. M)
- 15** Locate the Unitronic Cat Section (UH015-EX2) install the cat section onto the turbo be sure to align the two (2) studs from the downpipe bracket into their specific slots on the downpipe. Re-install the two (2) nuts. Leave them hand tight to ensure proper alignment at the turbo. (See Fig. N)
- 16** Reinstall the factory V-Band, leave it hand tight.
- 17** Tighten the two (2) fasteners on the downpipe bracket along with the factory V-Band. (See Fig. O)
- 18** Re-install the upper Oxygen Sensor. Plug it back into the connector. (See Fig. P)
- 19** Locate the Unitronic Midpipe (UH025-EX1) and install the lower downpipe subframe bracket onto the mounting bracket of the Midpipe.



FIG. I

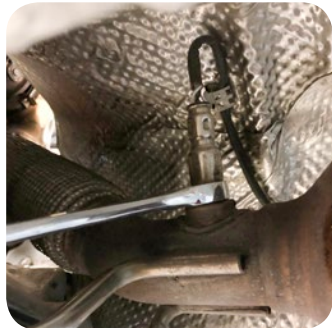


FIG. J

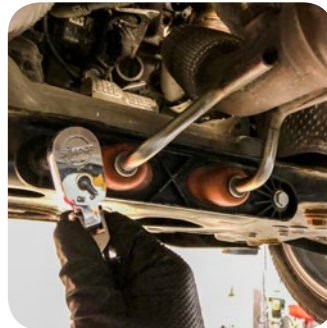


FIG. K



FIG. L

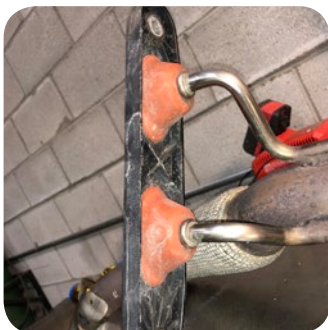


FIG. M

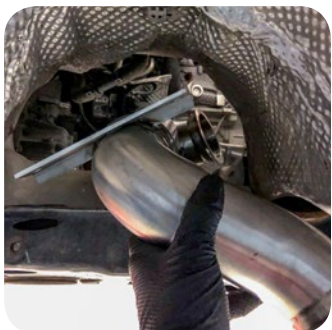


FIG. N

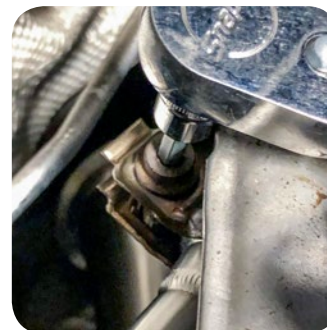


FIG. O



FIG. P



INSTALLATION INSTRUCTIONS
Unitronic Downpipe for 1.4 TSI® EA211
UH032-EXA

- 20** Locate the Unitronic 3" to 55mm Reducer (UH010-EX3) and install onto the Unitronic Midpipe, using your 11mm socket with the Unitronic V-Band and sealing ring.
- 21** Locate the last Unitronic V-Band Clamp and the sealing ring and mate the Midpipe to the cat section. (See Fig. Q)
- 22** Reinstall the downpipe bracket onto the subframe with the two (2) 13mm bolts. (See Fig. R)
- 23** Slide the exhaust sleeve onto the reducer and tighten using your 13mm socket. (See Fig. S)
- 24** Reinstall the chassis reinforcement bracket using the four (4) nuts and your 13mm socket.
- 25** Reinstall the lower Oxygen Sensor be careful not to twist the wires too much. Tighten with your 22mm Oxygen sensor wrench. (See Fig. T)

CONGRATULATIONS! You have successfully installed Unitronic's Downpipe!



FIG. Q

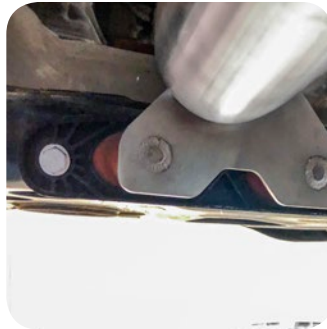


FIG. R



FIG. S



FIG. T